

2026 PARENT HANDBOOK





Contents

Contents.....	- 2 -
School Information	- 3 -
About Port Broughton Area School	- 5 -
Key Contacts.....	- 6 -
Starting School	- 7 -
Communication.....	- 8 -
Student Leaderships & Family Participation.....	- 9 -
Key School Policies & Procedures	- 10 -
School Organisation	- 10 -
Curriculum.....	- 13 -



School Information

School Phone: (08) 8635 2105

School Website: www.pbas.sa.edu.au

Library Phone: (08) 8635 2863

School email: dl.0741_info@schools.sa.edu.au

Enquiries

All phone enquiries should be made to the front office where one of our Administration Staff are the first point of contact. Alternatively, any enquiry made to the School's email will be redirected to the appropriate person.

If you plan to visit the school personally, please sign in at the front office first. From there, you will be taken or directed to the appropriate location.

School Times

Students are encouraged on school grounds after 8:30 am, when a yard duty staff member will begin supervision for the day. Our daily lessons commence at 8:50 am with Morning Homegroup. This is an important part of each day as it provides time for students to settle into the school environment and to organise their learning for the day. We strongly encourage parents to ensure that their children arrive between 8:30 am and 8:50 am to allow time for organisation such as greeting their classmates, checking in with their teacher, and visiting administration/office area if necessary.

Children are dismissed at 3:10 pm each day, except on the last day of each school term when they are dismissed at 2:10 pm.

Lesson:	Times:	
First Bell	8:30 am	School Day Commences
Morning Home Group	8:50 am - 9:00 am	Lessons Begin
Lesson 1	9:00 am - 9:50 am	
Lesson 2	9:50 am - 10:40 am	
1 st Break	10:40 am - 11:00 am	Recess
Lesson 3	11:00 am - 11:50 pm	
Lesson 4	11:50 pm - 12:45 pm	
2 nd Break	12:45 pm - 1:25 pm	Lunch
Lesson 5	1:25 pm -2:15 pm	
Lesson 6	2:15 pm -3:05 pm	
Afternoon Home Group	3:05 pm - 3:10pm	Dismissal
Last Bell Busses Leave	3:15 pm	School Day Concluded



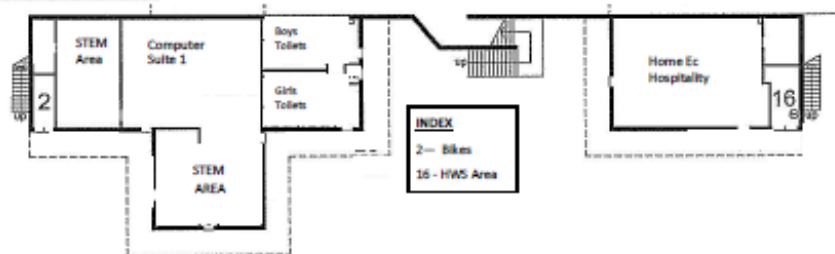


Map

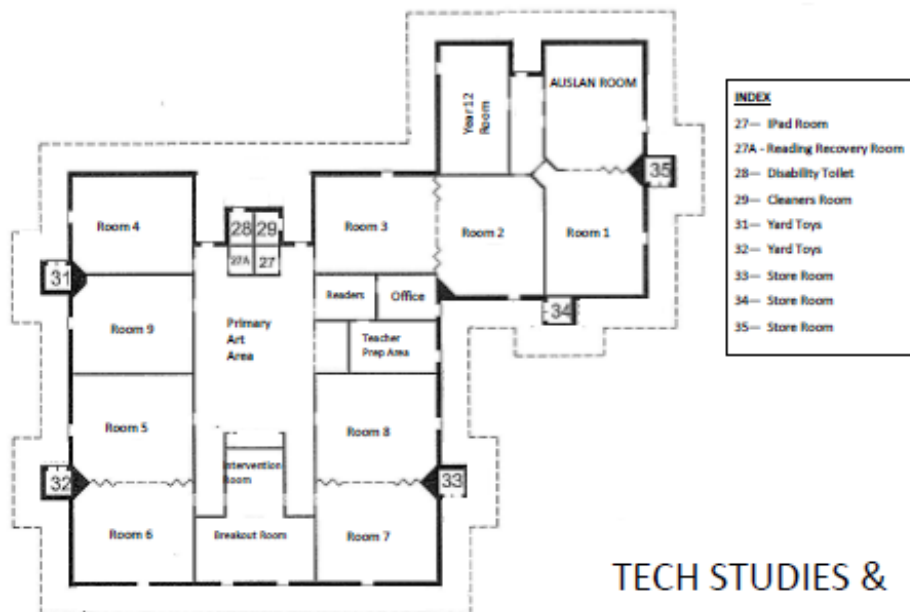
UPPER LEVEL



LOWER LEVEL



CLASSROOMS



TECH STUDIES & TRADE TRAINING CENTRE



About Port Broughton Area School

Education commenced in this district in 1879. By 1949, all the smaller district schools had closed and Port Broughton became the centre for education. In 1960, it was reclassified as an Area School, catering for students up to year 11. Year 12 was offered for the first time in 1986.



Until 1984 the school was situated on Edmund Street. In February 1984, the new facilities were opened and the school moved to its present site. The school is now able to offer an educational program using some of the best facilities available to schools of our size anywhere in South Australia.

Respect, Resilience and Success are values we cherish. We aim to instil these qualities in our students, fostering a sense of belonging and responsibility.

We are a community focused on learning and growing together. We believe that a respectful school community enhances a student's sense of belonging and safety allowing them to thrive. Our commitment to resilience empowers students to embrace challenges and take risks, helping them develop confidence and pride in their learning journeys. We recognise that success is more than just an individual outcome and encourage students to set purposeful goals, fostering a culture where believing in one's abilities drives achievement and personal growth.

Continuous improvement is a core value, as we strive to strengthen performance and maintain interest and motivation in learning. Great things are achieved by consistently getting just a little bit better at everything we do.



Key Contacts

School Leaders

Principal	Scott Moore	Scott.Moore288@schools.sa.ed.au
Deputy Principal	Jess Janz	Jess.Janz883@schools.sa.edu.au
Secondary Coordinator	Nick Turra	Nick.Turra264@schools.sa.edu.au
Student Wellbeing	Kristy Patterson	Kristy.Patterson79@schools.sa.edu.au
Business Manager	Jodie Mackrill	Jodie.MacKrill376@schools.sa.edu.au

Home Group Teachers

Reception	Cassidy Bowley	5/6 PT	Paul Townsend
1/2 JS	Jenni Stringer	7/8 TH	Tanya Hacket & Justin Brook
2/3 AI	Angela Ingram	9/10 JF	Joshua Furler & Tyler Norton
4/5 CW	Corey White	11/12 CC	Cendall Cowan

Subject Teachers

AUSLAN	Tiahana Yates
Primary HASS	Jackie McLoughlin

Learning Support & Intervention

Brett Ireland	Stacey Gower	Suzie Cameron
Sarah Wilson-Turra	Julie Stoeckel	Amanda Dalling

Student Wellbeing Support

Tracy Ireland

Administration

Suzanne Kerley	Jan Tod
----------------	---------

Community Library

Teacher Librarian	Jackie McLoughlin
Community Library Officer	Tresia Lenthall

Grounds

Peter Button	Jason Dunstan
--------------	---------------

IT Support

Luke Wharton



Starting School

Transition From Kindy to School

Transitioning from Kindy to school is a significant milestone for both children and their families. We value strong relationships, and we work closely with Port Broughton Kindergarten to ensure a smooth and supportive transition for our youngest learners.

Our transition program is an ongoing part of our Reception's weekly timetable. It includes a range of activities where current PBAS children and Kindy children build ongoing relationships. These learning opportunities provide a continuity of learning that set up students to succeed as they begin their schooling journey. Once a child begins school, they continue to be connected to their Kindy friends and in turn become leaders for other students making this transition.



Through these efforts, we aim to create a nurturing environment where children can thrive, develop their skills, and enjoy their learning experiences as they embark on this new chapter.

What to Expect

Reception students engage in learning with a focus on investigation to foster curiosity, creativity and engagement. This approach integrates learning area and learning through play as a teaching practice. Students develop their Personal & Social Capabilities through engaging with others, learning important skills and a deep sense of connection and belonging within their school.



Reception students will complete daily literacy lessons. These include a focus on oral language, early literacy skills and a phonetic approach to reading following the Department for Education's Phonics Program. These are complimented by a range of activities to develop writing and comprehension, as well as a passion for reading. Children will bring home a readers at some stage, we encourage you to support their reading and provide them with a wide range of reading experiences.

Numeracy is also a daily lesson within our Reception class. These experiences include counting and becoming familiar with numbers, comparing and ordering objects, and becoming comfortable with talking about mathematical concepts.

Wellbeing

Student wellbeing is a high priority for us, in order for a child to be an effective learner they must have a strong sense of connection and belonging. We have a consistent school wide approach to our Child Protection Curriculum through Open Parachute and several social and emotional learning interventions throughout the school. The school has a Student Wellbeing Leader and a Student Wellbeing Support Worker on site every day to support student wellbeing and positive mental health.

Communication

We believe in building good relationships and strong partnerships between the school and our community to promote a positive learning environment for students. We are committed to open, honest and timely communication which is both respectful and constructive.

Due to the nature of the classroom environment, it is often difficult for staff to check messages regularly during the school day. **Messages from home requiring urgent attention, such as change of pick-up arrangements, medical issues etc, should be communicated via phoning the front office on 0(8) 8635 2105.**

PBAS Communication Methods

In Person/Face to Face: For lengthy discussions or queries, an appointment should be made with the appropriate staff member. Please do not attempt to meet with staff formally at morning drop off or afternoon pick up times.

Telephone: Staff are expected to be available for phone calls or scheduled meetings between **3:10-4:00pm** during the week (excluding on Wednesday during staff meetings). At times SMS text messages are sent, these include newsletter links, attendance explanation requests, and student behaviour updates.

Daymap: Daymap is our primary platform for two-way communication between teachers and families. It is used to share learning experiences, work samples, and any relevant information, notes, or messages related to specific classes.

SEESAW (Primary): Method of two-way communication between classroom teachers and parents/caregivers, specialist teachers at times will also use this platform. This will be used to share learning experiences, work samples and any relevant information/notes/messages relating to their specific class.

Facebook: Is used to communicate school information, however this is not a primary method of two-way communication.

Newsletter: Published three times a term, the PBAS Newsletter contains information regarding recent and upcoming events as well as snapshots of student learning.

Email (dl.0741_info@schools.sa.edu.au): When communicating information at times we will also use emails to those parents/caregivers listed as PG1 and PG2 on children's enrolment forms.

School Website (www.pbas.sa.edu.au): The school also has a webpage with information regarding policies, school-based information and staff, as well as our Parent Grievance policy.



Student Leaderships & Family Participation

School Leaders

Students have many opportunities to develop leadership skills during their time at PBAS. This includes being a member of our active SRC and being a House Captain or Vice-Captain. These roles are elected by the student body to represent their interests in the school decision making process. Our School Captains are also members of the Governing Council, providing another way for students to contribute to their school community.



Governing Council

The Port Broughton Area School Governing Council is an important way to share parent and community voice and perspectives, providing guidance for school decision making and directions. The Governing Council holds its AGM in Term 1 of each year and meetings are held twice a term once at the beginning and again towards the end of term. Meetings generally go for approximately 60 to 90 minutes.

Any parent or guardian with a child at Port Broughton Area school can become a member of our Governing Council. You will stay up to date with your child's learning and any future directions for the school as you hear from the Principal, school Leaders and teachers first hand as they talk about opportunities that are coming up for students and their families.

Chairperson

Megan Harris

Minutes/Agenda Secretary

Elise Bormann

Elected Councillors

Ben Ervin, Kellie Daniel, Tracy Ireland, Jane Hewett, Kevin Kelly, Jessica Hewett, Jade Haggerty

District Council Community Representative

Margaret McDonald

Staff Representative

Angela Ingram

Student Representative

Madison Schell

Deputy Chairperson

Andy Kelly

Treasurer

Kelly Daniel

Principal

Scott Moore

Student Representative

Karsha Ireland

Volunteering

Canteen

Our school canteen operates Monday, Wednesday & Friday, unless volunteers are unavailable, and is open at recess for drinks and/or snacks. Price lists with items available will be sent home in week 1 of each term. The canteen supports the school fundraising efforts. All families are asked to help if possible. Please notify the front office if you are able to assist.

Key School Policies & Procedures

School policies are developed in consultation with students, parents and school staff. The SRC and Governing Council play a central role in determining the focus of our policy development, ensuring that we reflect the needs of our community as their needs change. These documents are regularly updated and can be found on the school website. Key school policies include;

- | | | |
|-------------------|--------------------------|----------------------------|
| Attendance | SunSmart Policy | Student Behaviour Educator |
| Anti Bullying | School Grievance Process | Mobile Phone Policy |
| Student ICT Usage | Uniform Guidelines | |

Local Excursions & Walks

To maximise our students learning within the Port Broughton community, we have a Local Excursion and Walks Policy. This policy enables teachers to organise activities within the Town that may occur several times a year. A copy of this policy and permission to carry out these excursions is sent home at the beginning of every year, dates and details of excursions are then communicated as they occur. Examples of these excursions include, attending Remembrance Day service, using the Port Broughton Foreshore, Lawn Bowls and Golf Course facilities. Visiting the Hospital, Barunga Village and other local businesses.

School Organisation

School fees

The Governing Council establishes school fees for each student. Fees cover students’ essential curriculum resources and some subject supplies and along with government funding, enable us to undertake major projects in curricula and grounds development. The fees do not however, cover excursions or camp costs. Accounts for school fees are sent to parents at the beginning of the year with details about possible methods of payment. Fees can be paid in full, or by arrangement with the business manager.

The Governing Council has set the 2026 Material and Service Charge at;

R-6	\$ 320	7-12	\$ 420
-----	--------	------	--------

School Card

Some families may be eligible for financial assistance from the government in the form of School Card. Eligibility can be assessed on the sa.gov.au/education/school-card website or you can ask at the front office for assistance. Early application, if you are eligible, is essential.

Custody & Other Court Orders

Parents who have sole custody or specific access restraints concerning their child should make this known to the Principal. Any information will be kept in strict confidence.

Smoking & Vaping

In line with government legislation our school is a smoke and vape free area 24 hours each day. Parents and visitors are asked to refrain from smoking or vaping on school grounds at any time.



Medication & Student Care

Staff are not permitted to administer any form of medication to students unless the following requirements are in place and provided to the front office in a plastic bag:

- **Clearly labelled with the student's name**
- **Clearly labelled with the dosage and times**
- **A medication plan completed by a doctor**

We are not allowed to administer antibiotic medication to any student. Antibiotics prescribed to be taken 3 x daily can be given before school, after school and at bed time.

With the possible exception of inhalers, the medication will be stored in a lockable cupboard.

Student Illness

The sick room is located in the administration area. Parents collecting sick students should park in the upper-level car park and enquire at the front office to collect their child.

If a student is absent from school or has to leave school during the day for dental or medical appointments a note or phone call is required from the parents providing a reason for the absence. Notes on Daymap, or Seesaw for primary students, is also a good way of communicating absences.

Emergency Care

For children who become ill, or are injured in a schoolyard accident, (other than minor incidents) parents or an emergency contact will be phoned by the school to:- advise parent/caregiver and/or arrange for the child to be collected from school

Please ensure that the school office has your current phone numbers and those of your emergency contact person(s). It is important that we be notified of any change of address or phone number.

Bicycles

All students who ride bicycles to school must enter through the gateway from the Bus Park on South Terrace. Students are to walk their bicycles along the pathway adjacent to the gymnasium and put them in the racks provided. This area is out of bounds to all students during the day. Similar procedures apply after school. Students collect their bike and walk it to the South Terrace exit.

Parent Parking

All parents visiting the school or bringing children to, or collecting children from school are asked to park in the southern side of the top level or, to alleviate congestion, in the parking area on the Kadina Road lower level

Staff Car Park

The northern side of the top-level car park is reserved for staff. It is preferred that the area in front of the main office be reserved for short term parking and visitors etc. to the school.

School Buses

Three school buses operate to the following local communities; Clements Gap/Fishermans Bay, Munderoo, and Wokurna/Ward's Hill. Students living in these areas are eligible to travel by bus to and from school. Students can only be collected and dropped off at their allocated stop.

A map showing details of all routes is available for your perusal at school. Timetables are reviewed and sent home at the beginning of each year. Changes are often made throughout the year, these will be communicated as they occur.

The driver, all passengers and other road users have the right to be safe and free from harassment.

At Port Broughton Area School, we expect our students to travel in a safe and respectful manner so that everyone arrives at school ready to learn and returns home safely.

- All students are to remain seated at all times unless boarding or alighting.
- No part of the body, eg. arms, should be outside the windows.
- No rubbish is to be thrown from the bus or about in the bus.
- Students will sit in allocated seats at all times unless otherwise instructed by the driver.
- Refusal to obey a reasonable instruction from the driver will result in referral to detention.
- Students will not write on or damage the bus in any way.
- Students will behave in an appropriate manner so that the driver is not distracted from their job.
- Feet and bags should not be put on the seats.

Consequences For Breach Of Rules

At PBAS, we see the management of student behaviour as a joint responsibility between parents, staff and students. Following a serious breach of rules, the bus driver will refer the student to School Leadership. The following steps will be put in place to ensure student safety on school buses. All unacceptable behaviour will be reported to School Leadership and the following process will apply;

- Step 1 – Message to parents.
- Step 2 – Phone Call to parents.
- Step 3 – Removal from bus for a period of time determined by the Principal.
- A continued breach of rules may result in suspension from bus travel for a period of time.

Buses will not run on Catastrophic Fire Days

Curriculum

Primary

At Port Broughton Area School, our R-6 teachers are dedicated to creating a learning environment that is caring and nurturing. We actively encourage parent participation and guide students from concrete thinking to abstract reasoning.

Phonics Program: We utilise the Department for Education's Scope & Sequence program to teach reading and writing through synthetic phonics, recognised as an effective method for literacy development.

Independent Learning: We have a focus on the Personal Social Capability from the Australian Curriculum. Students are encouraged to develop independent learning skills, engage in self-assessment, and work collaboratively. They are taught to pose and solve problems actively.

Our curriculum includes explicit teaching, modelling, activity-based learning, resource-based learning, group work, and cross-age work to cater to diverse learning needs.

Areas of Study: Eight key areas are taught across all Primary Year Levels:



- English
- Mathematics
- Science
- Technologies
- Health & Physical Education
- The Arts
- Humanities & Social Sciences (HASS)
- Language Other Than English (LOTE) - AUSLAN

Inclusivity: We are committed to an inclusive curriculum. Students with learning difficulties are identified early and supported throughout the year. Our intervention programs prioritise small group settings to ensure students continue to learn with their peers while receiving learning support.

Parental Involvement: We believe in effective communication and partnerships between students, the school, and families to enhance educational and wellbeing outcomes. Parents and caregivers are encouraged to communicate with teachers regarding their child's education.

Facilities: Our R-6 students benefit from closely situated classrooms and play areas, fostering a sense of belonging. They have access to the library, oval, and general-purpose room, as well as specialist areas like the Food Technology Centre, Science Labs, Stem Room and Art room throughout the year.



Secondary

The PBAS 7-12 Secondary program is designed to meet the individual demands of students as they transition from Primary education through to Post School Pathways. Staff design and relevant and rigorous education experiences that reflect individual student needs and interests. Our core values of Respect, Resilience & Success are a key focus, where students are encouraged to be the best they can be and develop respectful relationships between all members of the school community.

Our middle schooling structure offers the support needed to engage and guide our students as they transition from primary school into a secondary environment. The middle school curriculum supports the deepening of Knowledge, Capabilities and Dispositions, and skills across a diverse range of learning areas. Fundamental literacy and numeracy skills are developed across the curriculum to provide our learners with essential skills and readiness for senior school as well as preparation to enter the workforce or access post school education.



Learning Areas The secondary school curriculum is organised into seven learning areas following the Australian Curriculum:

- English
- Mathematics
- Technologies (Food, Materials and Digital)
- Science – including Agriculture
- Humanities
- Health and Physical Education
- The Arts



Our Senior Secondary has a bespoke structure that meets the needs of students in an individualised way. Each student has a different pathway, and we work to ensure that they have the widest possible range of options throughout their schooling and beyond.

We are actively involved in the Yorke Peninsula Secondary Alliance which provides all students on the Yorke Peninsula the opportunity to experience locally delivered learning and connection activities. We are also partnering with the Port Augusta Technical College to expand the

opportunities for students following a Vocational Education Pathway. Our goal is for every student to experience success in their schooling, we work to co design what success looks like with students and their families as they progress through their secondary school years.

SACE

The South Australian Certificate of Education (SACE) is a modern, internationally recognised secondary school qualification.

The SACE is a two-stage certificate.

Most people study Stage 1 in Year 11 and Stage 2 in Year 12, each subject studied at school is worth either 10 or 20 credits, depending on the subject and length of subject. Subjects are worth 10 credits for one semester and 20 credits for a full year.

200 credits are required to complete the SACE, some of the credits will come from compulsory requirements. To achieve your SACE, compulsory requirements must be completed with a C grade or higher at Stage 1, and a C- grade or higher at Stage 2:

Stage 1

- **Exploring Identities and Futures** (10 credits)
- **Numeracy requirement** – a mathematics subject in Stage 1 or Stage 2 (10 credits)
- **Literacy requirement** – an English subject in Stage 1 or Stage 2 (20 credits)

Stage 2

- **Activating Identities and Futures** – (10 credits).
- Of the remaining 150 credits you will need to make up your 200 credits, at least 60 credits must be at Stage 2 level.

VET

VET stands for Vocational Education & Training. Students can gain nationally recognised accreditation in industry standard competencies or modules.

A VET course offers students:

- the option to combine a vocational pathway with their SACE studies
- an opportunity to obtain a certificate I, II or III qualification
- a pathway to further tertiary study or vocational education.

Students can study VET courses through Registered Training Organisations (ie TAFE) while completing their senior schooling. VET courses allow students to gain SACE accreditation either at Stage 1 or 2 level, with parent/carer approval, students can either complete a VET course in lieu of a school-based subject, or in addition to the full load of school subjects.

The SACE planner

Exploring Identities and Futures = 10 credits

Literacy = 20 credits Choose from a range of English subjects or courses

Numeracy = 10 credits Choose from a range of mathematics subjects or courses

Stage 2 subjects or courses = 60 credits

Choose from a range of Stage 2 subjects and courses

Research Project = 10 credits

(Activating Identities and Futures from 2025)

Additional choices = 90 credits

Choose from a range of Stage 1 and Stage 2 subjects and courses

To gain the SACE, you must earn 200 credits

<input type="checkbox"/>	Compulsory Stage 1	Students must achieve a C grade or higher for Stage 1 requirements and a C- or higher for Stage 2 requirements to complete the SACE.
<input type="checkbox"/>	Compulsory Stage 1 and Stage 2	
<input type="checkbox"/>	Compulsory Stage 2	
<input type="checkbox"/>	Choice of subjects and/or courses (Stage 1 and/or 2)	Students must achieve a grade or equivalent for subjects and/or courses selected.

